

Fire Doors Rite Solutions

Installation Instructions & Adjustment



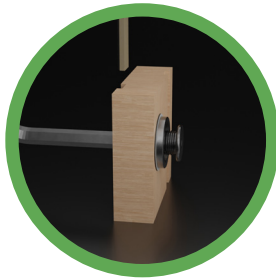
1 FRAME TOLERANCES

Manufacturing frame tolerances should allow a minimum of a **10mm** gap either side, all around the frame to structural opening and at the head to enable a minimum and compliant fire stopping of a **width: 10mm x depth: 10mm** intumescent only fire sealant to both faces of the door frame to the structural opening.

E.g. a structural opening **width: 1000mm x height: 2100mm** structural height opening would mean the doorset size needs to be **width: 980mm x height: 2090mm** maximum.

2 MINIMUM TESTED AND COMPLIANT GAPS

A minimum of **10mm** gap as tested and compliant is allowed, **width: 10mm x depth: 10mm** minimum Intumescent to both faces of the door frame to the structural opening.

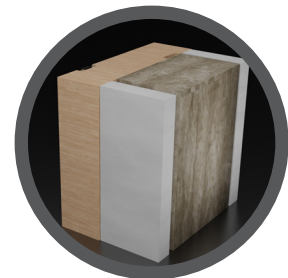


3 STRUCTURAL OPENING

Measure the structural opening and wind out the **PAKnJAK** outer jacking feet equally both sides, to enable a compliant and as equal as possible fire stopping gap all around but no less than a **10mm** gap, doing this before pushing the frame into the opening will speed up installation and will enable the correct minimum gap for fire stopping.

4 MAXIMUM TESTED AND COMPLIANT GAPS

A maximum **width: 20mm** gap as tested and compliant is allowed, if using fully gap filled and compressed mineral wool with an allowance of **width: 20mm x depth: 10mm** minimum Intumescent sealant over the top of the mineral wool to both faces of the door frame to the structural opening.



5 SCREW FIXINGS

Once frame is in place, fix a minimum of a 6.0 x 50mm multi purposes screw type into metal stud or timber stud partition/wall, if into concrete/masonry wall then the use of a minimum 7.5 x 50mm concrete screw can also be used - loosely screw into the structural opening but not screwing the screws fully tight.

**additional screw fixings near the PAKnJAK can be used if the structural opening is of a poor substrate, ensuring the PAKnJAK is still wound out as a packer.*



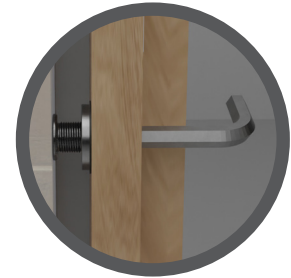
Fire Doors Rite Solutions

Installation Instructions & Adjustment



6 FRAME TO DOOR LEAF GAPS

With the supplied Allen key wind the jacking foot in or out to achieve correct frame to door leaf gaps and plumb and level frame, close door, check gaps between frame and door leaf are correct, adjust accordingly by winding in or out the PAKnJAK Foot.

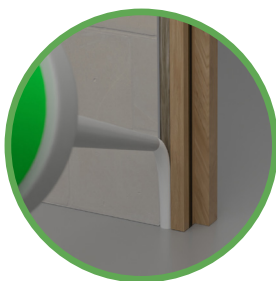


7 CORRECT GAPS

Once gaps are correct, screw fully and tighten the fixing screws into the structural opening, re-fit factory installed intumescent strips into the **15mm x 4mm** factory made groove.

8 MINIMUM GAPS

For gaps with a minimum **width: 10mm** all the way around the frame to structural opening, apply just intumescent sealant to **depth: 10mm and width: 10mm** to the front of the frame on both sides. If any areas are larger than 10mm wide, fit mineral wool tightly packed and apply intumescent Sealant to a minimum 10mm depth up to 20mm wide maximum to those areas.



9 OVER 10MM WIDE

If gap is over **10mm Wide** then cut and fit mineral wool/ablative batt cut to size of gap between frame and structural opening to a maximum of gap **width: 20mm**, tightly pack between the rear of the frame and structural opening leaving a **10mm Depth** gap at the front and back of the frame face to the mineral wool, once mineral wool packing is complete cover over the mineral wool/ablative batt with a minimum **depth: 10mm** by maximum **width: 20mm** Intumescent sealant.

10 ADJUSTING GAPS

Check door gaps are still correct, if adjustment is required, remove intumescent strip and loosen fixing screw, adjust PAKnJAK accordingly with the Allen Key provided, re-tighten and fix screw into structural opening, re-fit intumescent seal into the groove, fix architraves if supplied and required, ensuring no nails when fixing architrave are fixed through into the PAKnJAK positions.



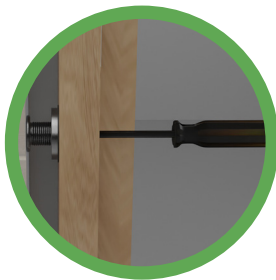
Fire Doors Rite Solutions

Adjusting Already Installed Doorset with PAKnJAKs



1 DOORSET GAPS

If the doorset gaps have moved and are now not within **3mm +/- 1mm** compliant tolerances, remove intumescent seal from the door frame groove. **No need to remove the architraves as long as the gaps to be adjusted are no bigger than 3mm +/- 1mm overall.**

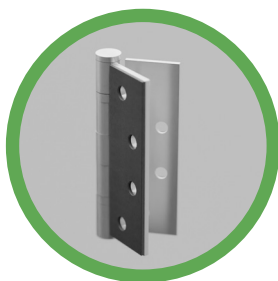


2 FIXING SCREWS

Unscrew the fixing screw slightly in the **PAKnJAK** through the visible hole in the Intumescent Groove.

3 WINDING THE JACKING FOOT

Using the Allen key provided or similar size and length Allen Key, wind the jacking foot through the hole, either clockwise to make the door gap smaller, or anti-clockwise to make the door gap bigger on both the hinge side, closing/lock side, and head if **PAKnJAKS** are installed in the head of the frame. Once the gap is correct and compliant, re-tighten the fixing screw and re-fit the intumescent seal back into the factory made groove in the frame.



4 OVER 3MM ADJUSTMENT

If door gaps to frame are more than **3mm** to adjust, generally on the closing/lock side and door leaf has shrunk excessively, the use of **1mm or 2mm** hinge interdens can also be used behind the hinge blades to decrease any oversized gaps, as well as adjusting the **PAKnJAK**.